

Safe Pharmaceutical Products with Sealing At Krewel Meuselbach GmbH

KrewelMeuselbach^{KM}

The medium-sized pharmaceuticals company Krewel Meuselbach GmbH manufactures top-quality, affordable pharmaceuticals at its Eitorf (North Rhine-Westphalia) and Gehren (Thuringia) sites in Germany, using state-of-the-art technology. The pharmaceuticals specialist has been putting its trust in METTLER TOLEDO solutions for a number of years now.

Traceability and prevention of product falsification

At the Eitorf site, Krewel Meuselbach uses the compact XS2 MV TE system from METTLER TOLEDO in a thermoforming line to ensure comprehensive quality control and prevent the falsification of its products. It achieves this through data matrix codes and tamper-evident seals.



XS2 MV TE

Krewel Meuselbach GmbH

Inline Checkweighing

FMD-ready Serialization

Optical Code Verification

Tamper-Evident Sealing

METTLER TOLEDO



Its diverse range of applications and compact structure make the XS2 MV TE from METTLER TOLEDO a truly impressive piece of equipment.

The XS2 MV TE combines precise weighing, marking, sealing, and verification with global requirements for traceability and the prevention of product falsification – even meeting the market requirements of the future. This is especially important for a pharmaceuticals manufacturer like Krewel Meuselbach, which produces goods in line with EU Directive 2011/62/EU and the GMP standard, and markets its products on an international level.

“The XS2 MV TE system has proven to be a reliable solution that meets our requirements when it comes to safety markings and tamper-evident seals. What’s more, it integrates perfectly into our existing production environments in Eitorf and Gehren,” explains Hilmar

Höhne, Head of the Technical Department at Krewel Meuselbach.

4-in-1 system combines checkweighing, serialization, optical code verification in one reliable unit

The spacesaving combination system XS2 MV TE offers reliable checkweighing with serialization, optical code verification and a tamper-evident seal applicator.

The weighing unit ensures the completeness of the pharmaceutical packaging. If, for example, the contents are missing or a blister is incomplete, the product is automatically removed from the production line by means of an air jet.

Once a data matrix code and plain text have been printed on the carton,

a camera monitors the printing process and rejects the products that do not meet Krewel Meuselbach’s quality requirements.

Alongside the data matrix code, an additional (tamper-evident) seal on the packaging protects the product against falsification. Self-adhesive sticker seals are attached to both tab openings on the packaging, and the packaging is then sealed. Following this, sensors check whether the seal has been correctly applied and whether the box is securely sealed. If the seal is destroyed, patients can easily see at a later date whether the product has been tampered with.

Protection against falsification

“By 2018 at the latest, prescription pharmaceuticals and individual over-the-counter medications will



All the latest data can be retrieved immediately on the clear operating terminal.

need to be protected against falsification and clearly identifiable. We are already meeting these requirements," Hilmar Höhne goes on to explain.

In the XS2 MV TE, perfectly coordinated systems – including product guidance systems, product transfer units, labeling systems, tamper-evident labelers, and inspection cameras – ensure a reliable product flow, a clear print image, and a correctly placed seal.

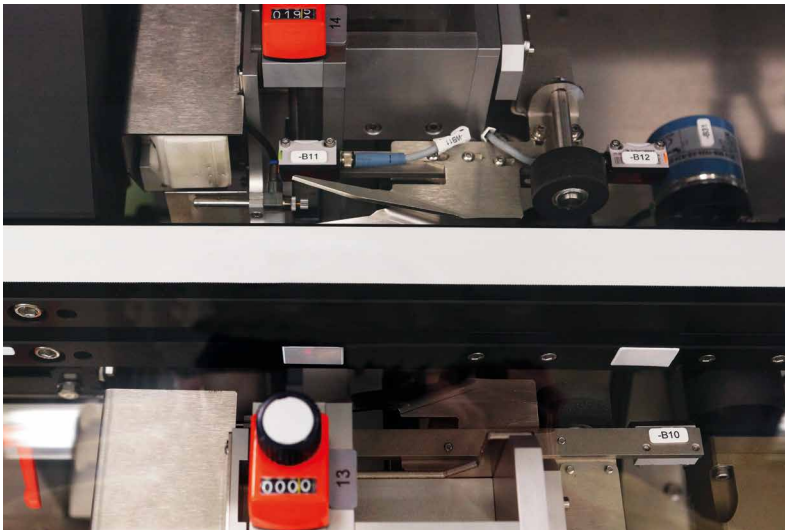
PCE Line Management Software

Krewel Meuselbach uses PCE Line Manager direct for all its line management operations: This is a specialist piece of software from METTLER TOLEDO that is able to store and process the 20 different packaging formats used by the company, as well as job information and product data. It also generates and stores the printed codes, serial numbers, and image information.

In addition to the PCE Line Manager direct, to ensure comprehensive production line management, PCE Site Manager will in future provide all information about the production process, such as production output, product and packaging quality, and coding. PCE Site Manager can be connected directly to the Krewel Meuselbach production database and provides those responsible for quality management with valuable information from multiple



4-in-1 solution for highest process safety



The precise product guidance of the XS2 MV TE system facilitates smooth product flow.

production lines at both production sites when necessary.

International company

Krewel Meuselbach GmbH is a medium-sized, independent pharmaceuticals company with an international presence in over 20 countries. It uses preparation and filling technology for liquid, semi-solid, and solid products, in both bulk goods and finished products.

Krewel Meuselbach GmbH offers a complete range of high-quality pharmaceutical products in the key areas of depression/central nervous system, pain relief, and cold and flu treatments.



Rule out pharmaceutical counterfeit by serializing, sealing and weighing

► www.mt.com/pce



Mettler-Toledo GmbH
8606 Greifensee
Switzerland

E-mail: product.inspection@mt.com
Website: www.mt.com/contact

Subject to technical changes.
© 07/2016 Mettler-Toledo GmbH.
PI-VI-CS-EN-GEN-KrewelMeuselbach-072016

www.mt.com/pi

For more information